



**C-CLAD**

# COMPOSITE CLADDING

Installation guide





## **IMPORTANT NOTES**

### **Read before starting installation**

Please read these instructions and familiarise yourself with both video and PDF versions . All diagrams and instructions in this guide are for illustration purposes and are not meant or intended to replace a professional installer. Any work undertaken with DDecks products must be in accordance with any building regulations required. The consumer assumes all risks and liability that may or may not be associated with the use of this product.

## **FOR YOUR SAFETY**

As with other building work it is important to work safely and to take suitable safety precautions including the wearing of protective clothes, gloves, safety goggles and dust mask. Visit the Health and Safety Executive's website [www.hse.gov.uk](http://www.hse.gov.uk) for more information on how to work safely

## **TOOLS REQUIRED**

Standard woodworking tools can be used when working with all our decking ranges

- Circular saw
- Power mitre saw for bevelled edges
- Jig saw
- Hand drill - 3mm and countersink drill bits
- Screwdriver
- Impact Driver
- Tape measure
- Carpentry square
- Spirit level
- Pencil





1. Make sure your surface is clear of any obstructions



2. Battens need to be installed in the opposite direction to your boards and will need to be pre-drilled to the surface below. Screws should be 5-6mm diameter and at least 80mm long.

**\*DDecks do not provide the fixings and screws for your installation**

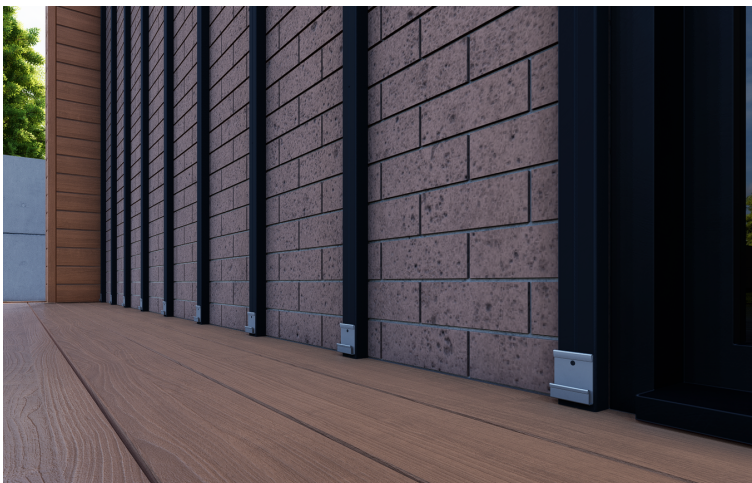


3. All battens need to be flat and level against the wall. Make sure you use a spirit level to check levels before fitting the boards. We recommend that the distance between the battens is 400mm centre to centre.





4. The Battens will need to run the entire length of the area being clad, adding in additional battens at any point where you will need to join two Cladding Boards end to end. We recommend leaving a 20mm gap between the bottom of each batten.

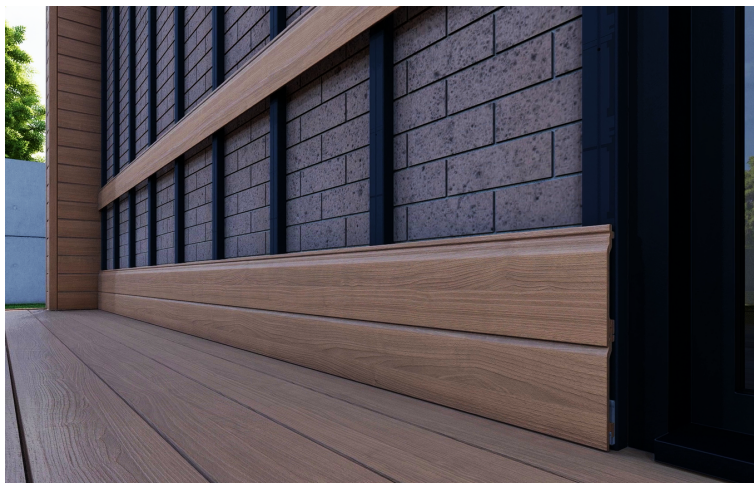


5. Attach a Starter clip to the bottom of each Batten, this will give the first Cladding Board something to clip into. Ensure that each clip is level with the next and that the first Board sits level on the clips before continuing to the next step. It maybe necessary to give the top edge of the cladding board a tap to ensure its fully seated in the starter clip.



6. Once the first board is in place, mark and then pre-drill pilot holes through the fixing groove at the top of your board and into the batten below. Slowly fasten ensuring that the board is securely in place, it is important not to over- tighten the screws and risk splitting the board. We recommend a 20mm gap from the first board and your finished floor level.

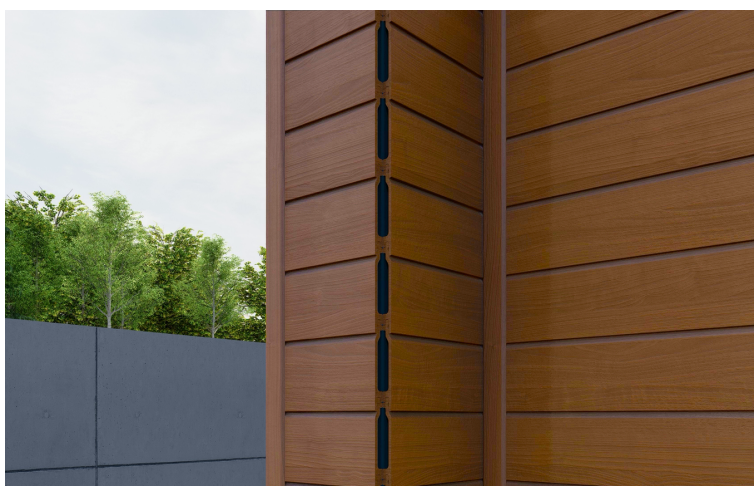




7. Slot the second board onto the first and repeat the fixing process ensuring that the second Board is fitted securely in place on each Batten. Repeat this process with each Board until you reach the required height. Keep a clear cavity between the rear face of the cladding and the outer wall/ surface of the structure being clad should be provided of no less than 25mm to allow sufficient airflow.



8. Continue to fit the Cladding Boards in this manner until you have completely covered the area you want. If you are running your boards length ways end to end , you will need to leave a min of 5mm gap between butt ends to allow for expansion. You may need to install more battens if you wish to do this, as each Board will need to be supported on a Batten where it meets the next Board.



9. Depending on your installation, you may want to finish your edges with one of our C- Clad corner trims. We recommend these being glued and drilled into position. Pre- drill pilot's holes before securing screws. Do not over tighten to prevent cracking of Trim.





10. Available in a range of colours to compliment your cladding. Simply apply an exterior grade, high elastic glue to the back of your Corner Trim and secure in place. Pre-drilling and fixing is also recommended in some instances.



11. Fascia Boards can also be used for finishing around window and door reveals. Cut the fascia boards to size and pre-drill holes before securing. Slowly tighten to prevent cracking of Boards. Colour coded screws can be used for this application



12. If required Corner Trims can then be added over the Fascia Boards for a long-lasting professional look.